

Xchange v3.6.x - Quick Manual



1. Installation Notes

- 1) Extract archive in .../foobar2000/skins/ folder
you should obtain this path for the skin : .../foobar2000/skins/xchange/...
- 2) Be sure you have all the required components (the last folder part, /f00bar2000/components/.dll's)
check deviant art page of Xchange 3.5.2 to see the liste of all the mandatory components (a link to a full zip package is present too)
- 3) Run foobar, go to Preferences (menu Files/Preferences or CTRL+P shortcut), ColumnsUI section then IMPORT the .fcl file extracted with the archive, should be located in .../skins/xchange/ folder
click button 'APPLY', then close settings to obtain the Xchange config as well.
- 4) To set covers art images (front, back, disc, artist ...) set their path in Preferences -> Display
for Graphical Browser panels, path need to be modified directly in the script (easy to find, it's at the beginning of the script and commented)
- 5) Adjust your layout using the Xc3 Editor :) then adjust settings of each individual components if needed (in general, right-click on the panel -> Settings ...)

2. Main screen

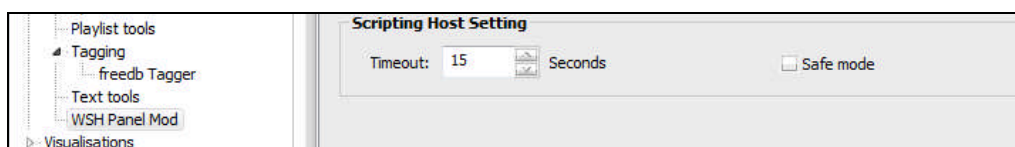
On first launch, after the import of the .fcl and after the Credits panel, you should obtain a such window with only one main : The playlist (ELPlaylist). It is maube empty if you haven't already set in foobar Preferences -> Media Library the path of the folder to scan for medias!



If you miss some images (buttons) or script errors, check path for images !!! [xchange](#) folder must be in **.../foobar2000/skins/** ... and check the components versions, especially for WSH Panel Mod

WSH Panel Mod Settings

You may have a SCRIPT ERROR box message for each WSH panels in this config if you have the option 'Safe Mode' ticked in the Preferences -> Tools -> WSH Panel Mod. To fix the problem, just untick the option Safe Mode, see below :

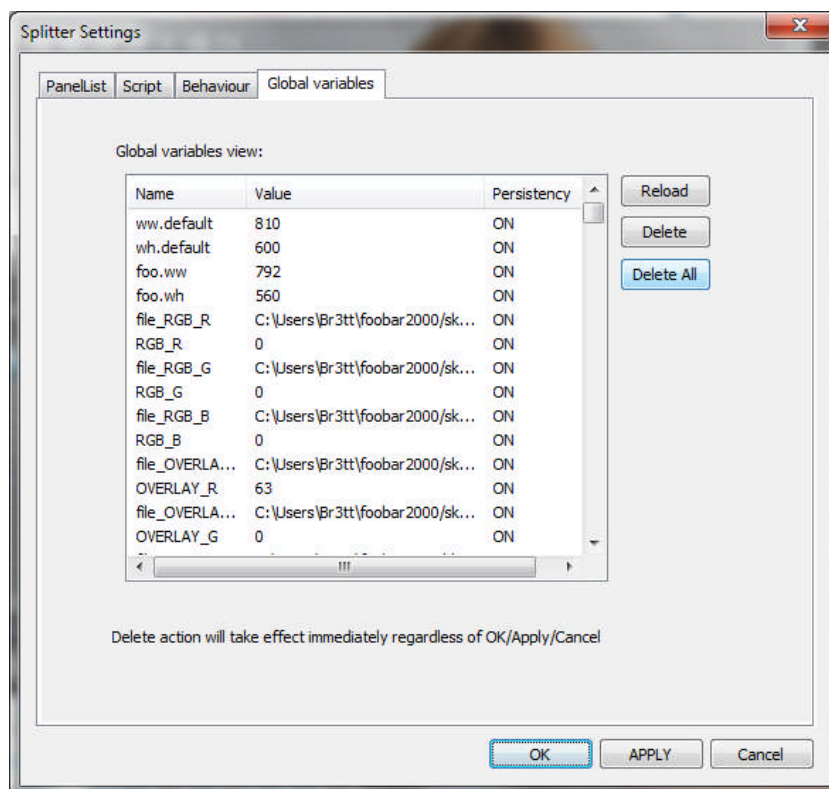


Covers & Photo

To display covers in WSH panels and in ELPlaylist, you have to set their path in foobar Preferences -> Display. Then set the filename mask or full path if covers are not stored in the music folder (front, back, disc, artist)

3. Important action to do if you don't install Xchange for the first time...

1) If you already have installed a previous version of Xchange, you should delete (reset) the globals variables set in Panel Stack Splitter. Right click on the top bar -> Splitter Settings, go to tab Global Variables then click the button '**DELETE ALL**', then click the '**APPLY**' button twice to ensure a good refresh of the whole config, then **CLOSE** 😊, **that's all and that may prevent some weird issues.**



IMPORTANT :

2) After each new installation (new version of Xchange), you have to delete all the settings files from the **.../skins/xchange/settings** folder stored in your **profile folder for foobar**, if not done, you may encounter some bugs with WSH panels (blank panel ... etc)

Profile path depends of the foobar2000 path. For a default installation folder (Program Files), in Windows 7, the path would be such as :

C:\Users\<windows_username>\AppData\Roaming\foobar2000\skins\xchange\settings

If you made a portable installation of foobar2000, the Profile path would be such as :

<your foobar2000_path>\foobar2000\skins\xchange\settings

4. Main buttons



- 1 Hide the default menu
- 2 Show Xchange settings
- 3 Show credits
- 4 Now playing links, open your web browser depending of the now playing track content
- 5 Default menu
- 6 Layout editor ON/OFF
- 7 Saved layouts (5 presets, check paragraph 3. below)
- 8 Show Search Toolbar + extra search buttons (same artist/album/genre/title)
- 9 Display mode selector (Miniplayer/Full mode/Art mode)
- 10 Minimize a panel to the dock on bottom

11 Maximize a panel

12 Exchange a panel with another one (visible one or docked one)

- a) Select the panel to exchange, the button turns to Green and window of the panel turns to green too
- b) Select the panel to exchange with (a visible panel or a docked panel) by clicking the red button
- c) Swap is done, it's that easy!

13 Change the orientation of the panels layout : Vertical (1-3 columns) or Horizontal (1-3 rows)

14 If orientation is vertical : add a new column (add a new panel which you could split later)

If orientation is horizontal : split the panel (divide the row from 1 to 3 panels)

15 Adjust the width of the panel

16 If orientation is horizontal : add a new row (add a new panel which you could split later)

If orientation is vertical : split the panel (divide the column from 1 to 3 panels)

17 Adjust the height of the panel

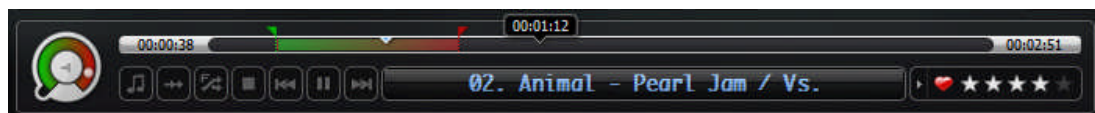
18 + button is for expanding the groups in the active playlist

- button is for collapsing the groups in the active playlist

Folder button opens the containing folder of the now playing track

NB: Closing all panels resets the current layout to 9 panels (the maximum), just use the close buttons to arrange the layout to your taste.

5. Seekbar / Repeat A-B



New feature that allow to loop on a part of a track.

Just drag the 2 flags available on the seekbar ... at start (the green one) and at end (the red one).

To remove an active A-B loop, just double click on flag A (green) or flag B (red), it's that easy!

6. Saving Custom Configuration (5 presets)

You can save your custom layout in one of the 5 available preset buttons in the top right.

A saved layout location contain parameters that you have set in Xchange :

- Visible and docked panels
- Position of each panel
- Size of each panel
- Main foobar2000 window size (optional)

To save your current layout, you have to enter 'EDITOR' mode, then the 5 file icons will turn to orange if the location is already used or green if the location is free.

- Click the 'Editor' button to enable 'SAVE MODE' (one more time to exit from it)

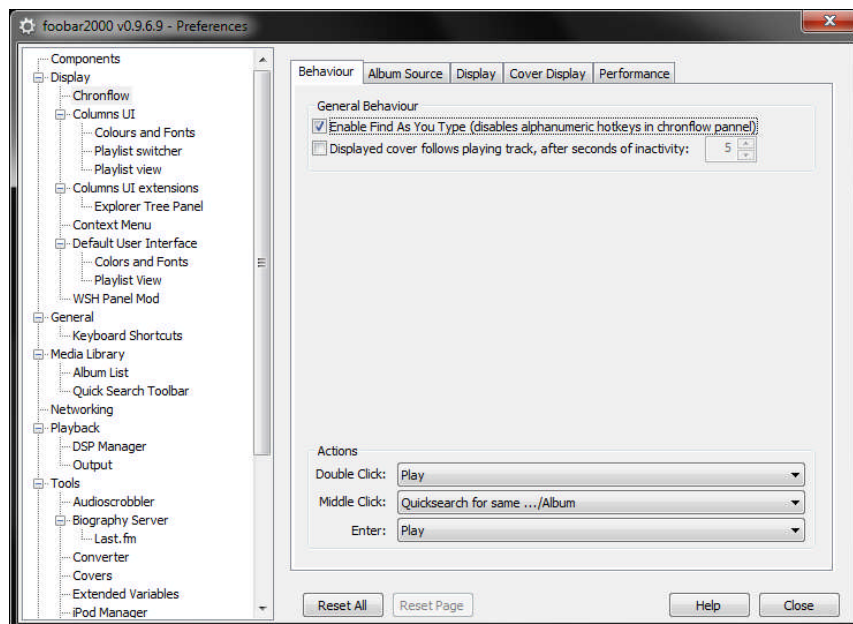


The little dot under the file icon (preset) indicates the last preset loaded.

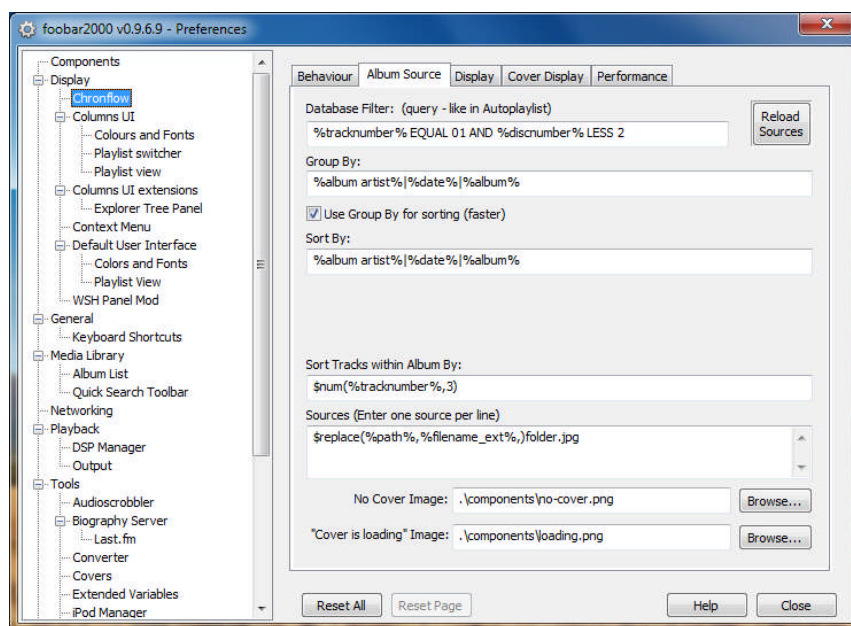
To load a saved preset, just click on its icon (be sure that 'EDITOR' is not active!).

7. Chronflow Settings

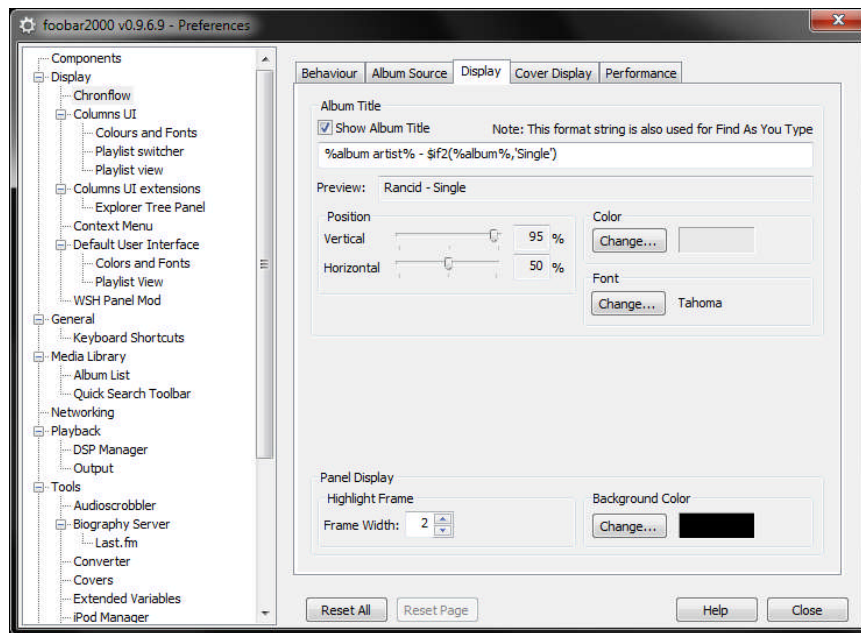
Tab Behaviour :



Tab Album Source :



Tab Display :



Tab Cover Display :

Here is the Jscript i use in Xchange :

```
// Author: mil3s (moded by br3tt for point of view)
// General Notes:
// Most of these functions return an array with 3 elements
// These are the x,y,z coordinates in 3d-space
// x is left to right
// y is bottom to top
// z is front to back

var coverSpacing = 0.18;

/***** COVER DISPLAY *****/
// These functions define the Display of the single Covers
// The given parameter coverId is a floating point number.
// It is 0 for the center cover, 1 for the one right
// beneath it, -1 for the one on the left side and so on.
// During movement the values float between the integer
// values.
function coverPosition(coverId){
var x, y, z;
y = 0;
if (Math.abs(coverId) <= 1){ // The centered cover
z = 4 + 0.5 * (1 - Math.abs(coverId));
x = coverId * 0.895;
} else { // The covers on the side
z = 4 - (Math.abs(coverId)-1) * 0.01;
x = 0.895 + coverSpacing * (Math.abs(coverId)-1);
if (coverId < 0)
x *= -1;
}
return new Array(x, y, z);
}

// return array is (angle, x, y, z) - this rotates
// the cover *angle* degrees around the vector (x,y,z)
// With (0,0,0,0) the cover is parallel to the x-y-Plane
function coverRotation(coverId){
var angle;
if (Math.abs(coverId) < 1){ // The centered cover
```



```

angle = coverId * -60;
} else { // The covers on the side
if (coverId > 0)
angle = -60;
else
angle = 60;
}
return new Array(angle, 0, .70, 0);
}

// Defines the the size boundaries for the cover.
// Aspect ratio is preserved.
// Return Array is (width, height)
function coverSizeLimits(coverId){
return new Array(1, 1);
}

// Sets which point of the cover coverPosition() defines
// (-1,-1) means bottom left, (0,0) means center,
// (1,1) means top right, (0, -1) means bottom center etc.
// The cover is also rotated around this point.
function coverAlign(coverId){
return new Array(0, -1);
}

// Defines the range of covers to draw.
// Return array is (leftmostCover, rightmostCover)
// This interval shouldn't be larger than 80
// The center cover is 0.
function drawCovers(){
return new Array(-35, 35);
}

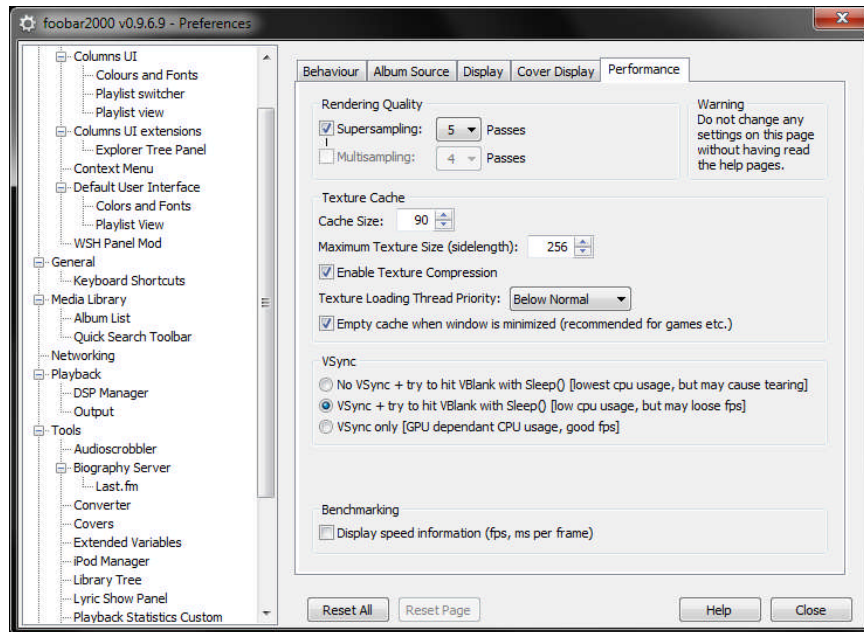
// In which direction should the fov be expanded/shrunked
// when the panel is resized?
// If this returns (0,1), the height is fixed.
// If this returns (1,0), the width is fixed.
// You can also return stuff like (0.5,0.5) or (7, 3)
// The values determine how important it is for this
// dimension to stay fixed.
function aspectBehaviour(){
return new Array(0, 1);
}

/***** CAMERA SETUP *****/
// Position of the viewport
function eyePos(){
return new Array(0, 0.90, 5.9);
}
// Defines the point for the eye to look at
function lookAt(){
return new Array(-0.0, -0.65, 0.4);
}
// Used to rotate the view.
// The returned Vector points upwards in the viewport.
// This vector must not be parallel to the line of sight from the
// eyePos point to the lookAt point.
function upVector(){
return new Array(0, 1, 0);
}

/***** MIRROR SETUP *****/
function showMirrorPlane(){
return true; // return false to hide the mirror
}
// Any Point on the Mirror Plane
function mirrorPoint (){
return new Array(0, 0, 0);
}
// Normal of the Mirror Plane
function mirrorNormal (){
return new Array(0, 1, 0);
}

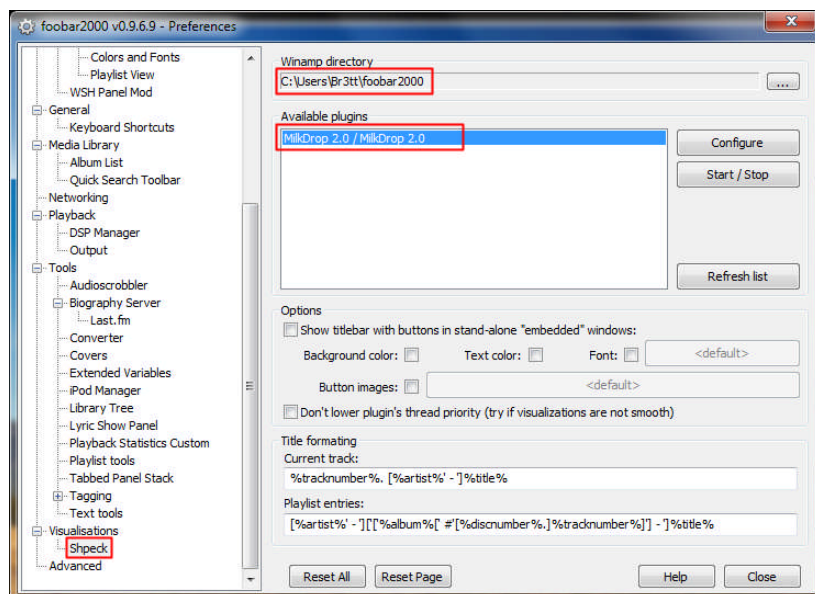
```

Tab Performance :

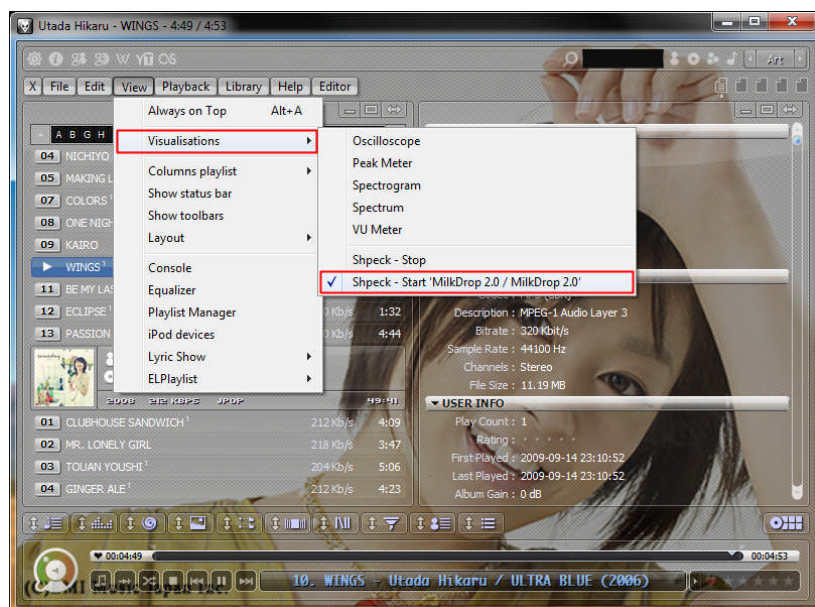


8. Shpeck Settings

1. If you're not familiar on how this plugin works (you need Milkdrop presets and dll ...), just extract the **Plugins Pack archive** that I propose to you (cf. link on Xchange 3.6 Deviant Art page) in your foobar2000/ folder, to obtain .../foobar2000/Plugins/ folder, and a fake winamp.exe file (0 kb) in .../foobar2000/
2. Then go to Preferences -> Visualisations -> Shpeck, set the path where is winamp.exe file (.../foobar2000/) ... check other settings if you want ...

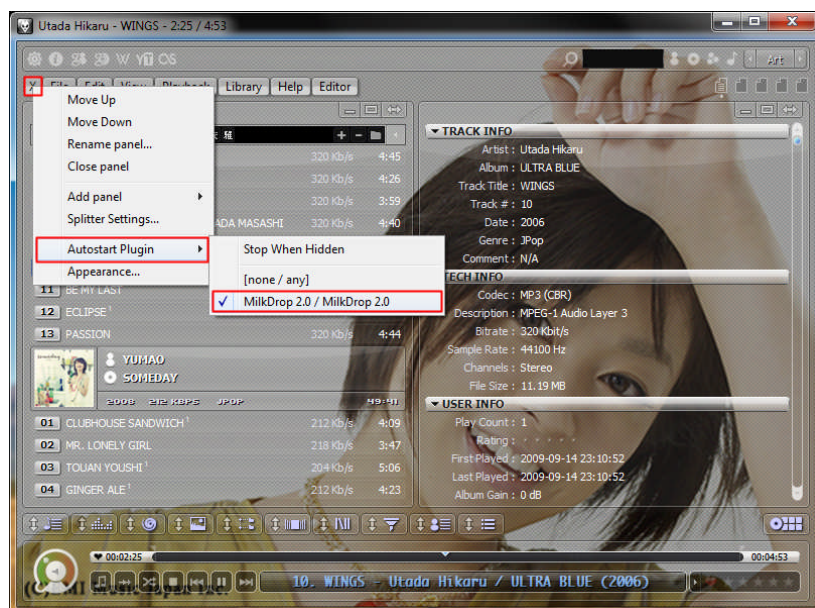


3. If not done, select 'Start Milkdrop ...' from the menu 'View' -> Visualisations, see below :



4. After these settings, to **autostart Shpeck** panel at each foobar launch, Shpeck needs to know which plugin to autostart (Mildrop is one of them, but there is other plugins ...). To acces to the Autostart Plugin option, you have to right click on the button 'M' or 'X' (depending of the status of

the foobar menu : Hidden or Shown), then select the entry 'AutoStart Plugin ->', then tick the Milkdrop choice ☺



Created the 2009/07/24 (Updated the 2010/02/20 for Xchange 3.6.0 release)